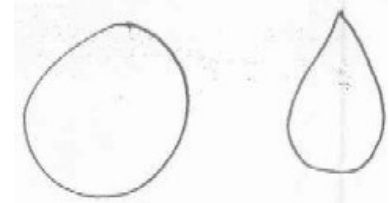


Please check the links on the main page to see other reproductions!

This is the main piece. The CA article recommends this being cut from a leather side. It basically is one piece that goes from the top front of your bottle, all the way underneath, and then back up the other side. In this manner, the two ends are sewn together and form the neck and mouth of the bottle. You can play with the dimensions a bit to create the size and shape you want. You would cut only one of these.

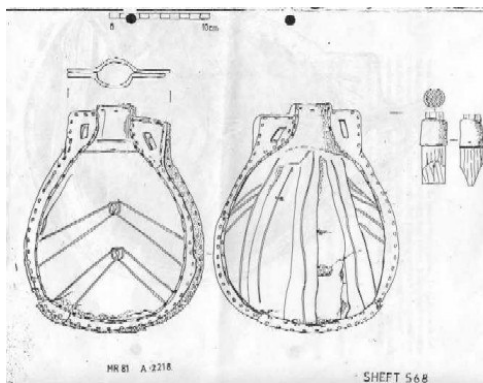
The next step would be to cut the end pieces. This could be perfectly round if you wanted your bottle to be very barrel shaped, or they could be more tapered toward the top (this will be a little easier to sew). You would pick a shape and then cut 2 of them. The CA article recommends they be cut of belly leather.



If you choose to cut the "plug" piece, it should be the same shape as the area next to the mouth and neck of your bottle. This plug helps to ease the angle between the flat seams between front and back, and the funky 3 way join with the sides.

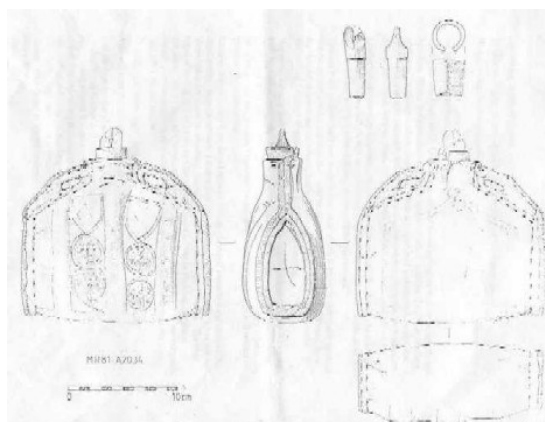
Images of Leather Bottles and Costrels

The Warship, the Mary Rose sank in 1545. The wreck was left undisturbed until it's discovery in 1971 and subsequent raising in 1982. It provided a troved of Tudor arifacts! As you can see, we have examples of both the 2 piece "gourd" shape and the 3 piece "barrel" shape.



On the left, we have the archaeological drawings from the Mary Rose Trust. (I got these from a handout from Lord Gawain Kilgore's University class years back)

On the right, someone's reproduction of this bottle



Once again, on the left the drawings of the costrel found on the wreck from the Mary Rose Trust. On the right, the top picture is a photo of the actual aritfact (from The Mary Rose website) and the bottom is a sketch of the same bottle from the book, [The Story of the Mary Rose](#).